

G30
B22
TULAY

VISION

Le collezioni TRE O si arricchiscono di nuovi materiali / superfici
The TRE O collections are enriched with new materials / surfaces
Les collections TRE O s'enrichissent avec nouveaux matériels / surfaces
Las colecciones TRE O se enriquecen con nuevos materiales / acabados

G30



Pag. 04



Pag. 18

B22



Pag. 32



Pag. 50

TULAY



Pag. 64



Pag. 78

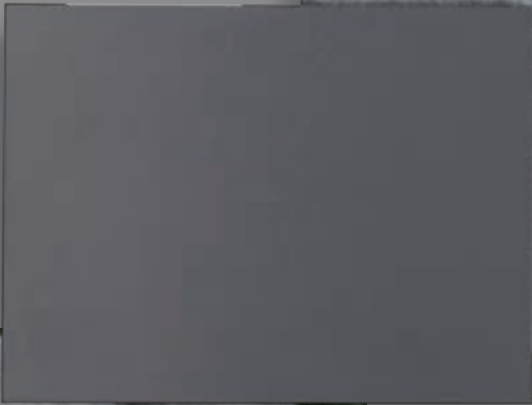
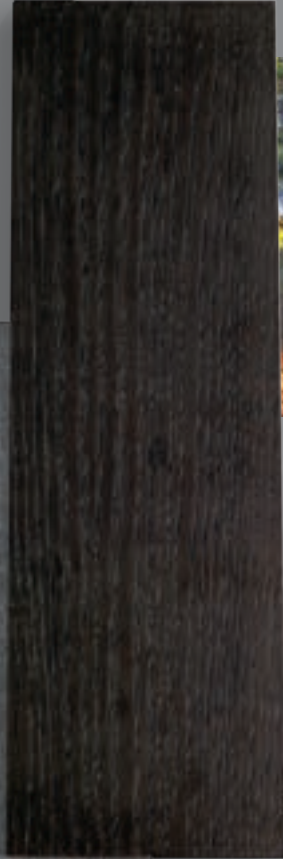


Cucina G30: Frontali con prensilità (taglio 30°), grande isola centrale con basi interne e nicchia a giorno in rovere ½ fiamma moro. Colonne, pensili e basi isola esterna in laccato bianco opaco. Piano cucina e isola in laminato pietra grigia. Colonne a giorno e mensole grigie interpretano il concetto di design per nuove soluzioni visive..

G30 Kitchen: *Prehensile doors opening (cut at 30°), a big central island with internal base cabinets and a opens shelves base cabinet in dark brown finish. Tall, upper and base cabinets on the external side of the island are white matt lacquered. Kitchen and island's countertops are laminated grey stone. Open shelves tall cabinets and grey shelves represent the design concept for new visual solutions.*

Cuisine G30 : Façades biseautées (découpe à 30°), un grand îlot central avec bas à l'intérieur et une niche ouverte en chêne foncé. Armoires, meubles hauts et bas à l'extérieur de l'îlot sont laqués blanc mat. Les plans de travail, soit de la cuisine que de l'îlot, sont stratifié pierre gris. Armoires ouvertes et étagères gris traduisent le concept du design pour nouvelles solutions visuelles.

Cocina G30: *Puertas prensiles (corte 30°), gran isla central con muebles bajos y el mueble abierto, puestos en el lado interior, en roble oscuro. Columnas, muebles altos y bajos puestos en el lado exterior de la isla son lacados mate blanco. Las encimeras de la cocina y de la isla son de laminado piedra grisa. Armarios abiertos y baldas grisas representan el concepto del diseño para nuevas soluciones visuales.*







SISTEMA APERTURA

OPENING SYSTEM

SYSTEME D'OUVERTURE

SISTEMA DE ABERTURA



Gola piatta Presa 30°



Gola sagomata



Push-pull

Grazie a soluzioni compositive flessibili e funzionali, G30 interpreta l'unicità del proprio mondo, adattandosi a dimensioni e forme della propria casa. L'elegante profilo gola, in tinta con i frontali crea una cucina minimale ma raffinata.

Thanks to flexible and functional compositions, G30 represents the uniqueness of your world, adapting to the size and shape of your home. Matching an elegant handle profile, in the same door finishing, creates a minimal but refined kitchen.

Grâce à des solutions composantes flexibles et fonctionnelles, G30 interprète l'unicité de son monde, en s'adaptant aux dimensions et aux formes de votre maison. L'élégance de la gorge, en finition façade, crée une cuisine minimale mais raffinée.

Con composiciones flexibles y funcionales, G30 interpreta la singularidad de su mundo, adaptándose a las formas y los tamaños de la casa. El elegante perfil gola, a juego con las puertas, crea una cocina minimalista y refinada.



















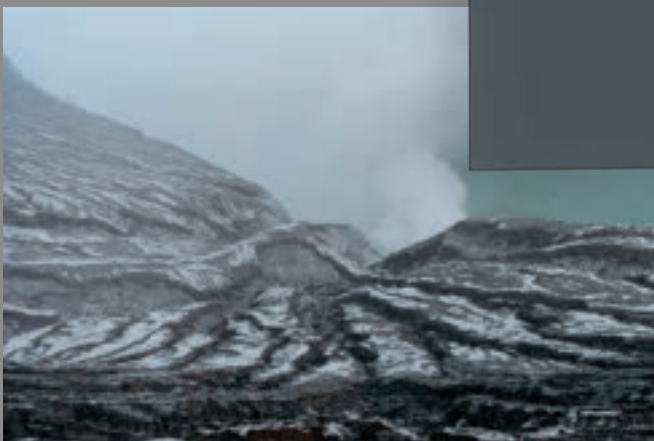


Cucina G30: Un grande spazio da vivere con la cucina G30. Importante blocco isola ad angolo e piano snack in olmo naturale impiallacciato. Basi rialzate in olmo naturale impiallacciato con pensile e colonne in fenix grigio Bromo. Superfici dall'alto valore estetico e funzionale per creare soluzioni uniche.

G30 Kitchen: A large space to live with the G30 kitchen. An important corner block for the island and the breakfast bar top in natural elm veneer. Raised base cabinets in natural elm veneer with a wall and tall cabinets Grey Bromo Fenix. Functional surfaces with an high aesthetic value to create unique solutions.

Cuisine G30 : Un grand espace à vivre avec la cuisine G30. Important îlot d'angle et plateau snack en orme naturel plaqué. Muebles bas surélevées plaqués orme naturel avec un meuble haut et des armoires en finition Fenix Gris Bromo. Surfaces de grande valeur esthétique et fonctionnelle pour créer des solutions uniques.

Cocina G30: Un gran espacio a vivir con la cocina G30. Importante bloque isla de esquina y encimera snack de olmo natural chapado. Muebles bajos elevados chapados olmo natural con alto y columnas de Fenix Gris Bromo. Acabados de alto valor estético y funcional para crear soluciones únicas.





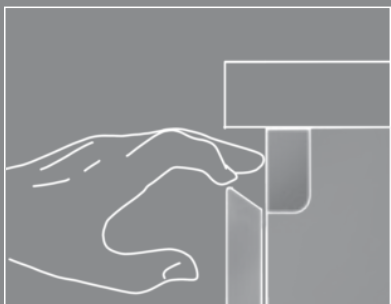


SISTEMA APERTURA

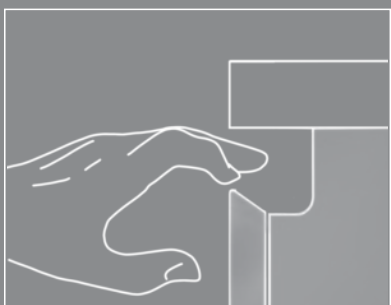
OPENING SYSTEM

SYSTEME D'OUVERTURE

SISTEMA DE ABERTURA



Gola piatta Presa 30°



Gola sagomata



Push-pull

Le atmosfere calde e familiari sono espresse nella cura dei dettagli che rende funzionale ed armonioso lo stile di G30. Questo programma abbina linee morbide e particolari distintivi, con la massima praticità di utilizzo e dal costo accessibile.

The warm and familiar atmospheres are expressed through the attention to the details that makes functional and harmonious the G30 style. This program combines smooth lines and distinctive details, with the maximum practical use and affordable price

L'atmosphère chaleureuse et familiale vient exprimée par l'attention aux détails qui rend le style de G30 fonctionnel et harmonieux. Ce projet combine des lignes douces et des détails distinctifs, avec l'utilité pratique d'utilisation et le prix abordable.

Las atmósferas cálidas y familiares se expresan en la atención a los detalles que hace funcional y armonioso el estilo de G30. Este programa combina líneas suaves y detalles distintivos, con la máxima funcionalidad de uso y con un costo asequible







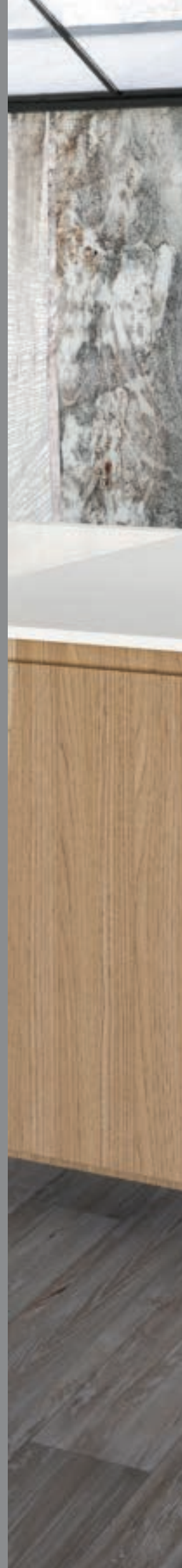


Un grande spazio da vivere unito da importanti blocchi isola, dove le soluzioni e i materiali fanno sì che tutto viva armonicamente. Cucine che si propongono come la zona più accogliente della casa, dove l'estetica è sempre al servizio della funzionalità.

A great space to live, with important island-blocks, where solutions and materials are harmoniously living. Kitchens that are proposed as the more welcoming space of the home, where the aesthetics is always at the functionality service.

Un grand espace à vivre, avec des grands îlots, où les solutions et les matériaux font vivre tous en harmonie. Cuisines qui se proposent comme la zone de la maison la plus accueillante, où l'esthétique est toujours au service de la fonctionnalité.

Un gran espacio donde vivir, unido por importantes bloques de islas, donde las soluciones y los materiales viven en armonía. Cocinas que se proponen como la zona la más acogedora de la casa, donde la estética es siempre al servicio de la funcionalidad













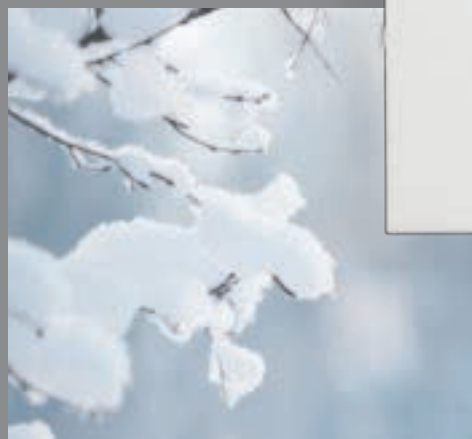
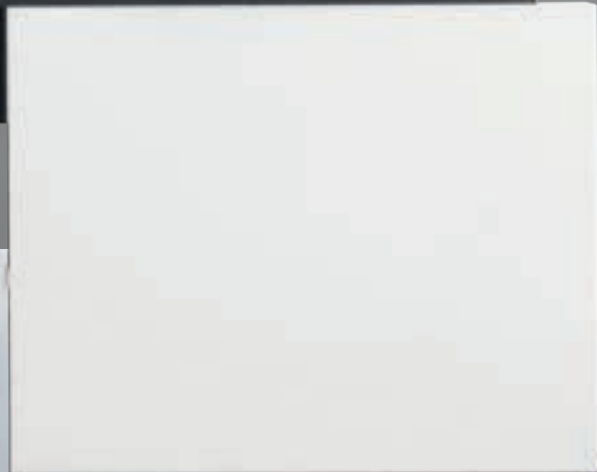


Cucina B22: Linearità e razionalità assolutamente adatti per una soluzione di grande contenimento. Basi cucina, colonne e pensili in bianco eccimeri OMF dall'assoluta utilizzabilità e ricercatezza della superficie. Isola centrale con basi in nobilitato noce deciso DV 5429. Top Isola e cucina in laminato Ardesia. Mensole in nobilitato bianco uniscono la cucina in una perfetta armonia.

B22 Kitchen: *Linearity and rationality completely suitable for a large containment solution. Base, tall and wall cabinets in white excimer OMF with a complete usability and refinement of its surface. The central island shows base cabinets in melamine Dark Walnut DV 5429. The countertop of the kitchen, same as the island's one, is laminated slate grey. Melamine faced white shelves connect the kitchen to create a perfect harmony.*

Cuisine B22: Linéarité et rationalité absolument adaptées pour une grande solution de confinement. Meubles bas, armoires et meubles hauts en blanc à excimères OMF donnent une absolue facilité d'utilisation et des surfaces sophistiquées. Dans l'îlot central il y a des meubles bas en mélamine noyer DV 5429. Les plans de travail, tant pour la cuisine que pour l'îlot, sont en stratifié ardoise. Les étagères en mélamine blanc sont le trait d'union de la cuisine et créent une parfaite harmonie.

Cocina B22: *Linearidad y racionalidad absolutamente adecuadas para una amplia solución de contención. Muebles bajos y altos y columnas en blanco excímeros OMF de la absoluta funcionalidad y refinamiento de sus superficies. En la isla central hay muebles bajos de melamina nogal DV 5429. Las encimeras de la cocina y de la isla son de laminado ardesia. Los estantes de melamina blanca son el punto focal de la cocina y crean una armonía perfecta.*









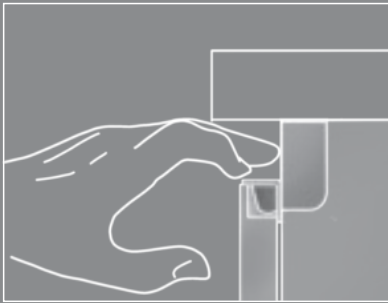


SISTEMA APERTURA

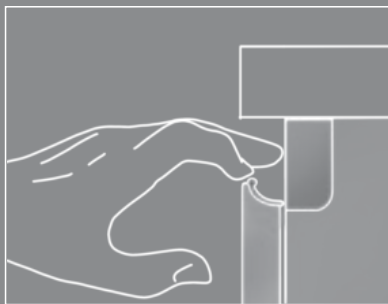
OPENING SYSTEM

SYSTEME D'OUVERTURE

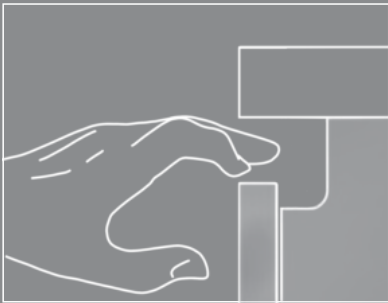
SISTEMA DE ABERTURA



Gola piatta Presa 177



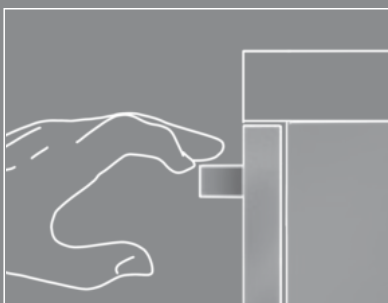
Gola piatta Presa 174



Gola sagomata



Push-pull



Maniglia



Maniglia 170

Seguire la pulizia della luce, vivere l'armonia di linee e volumi. Progettata per aggiungere emozione all'ambiente più importante della casa dove la qualità del prodotto si percepisce dalla cura dei suoi dettagli

Follow the simplicity of the light, live the harmony of lines and volumes. Designed to add emotion to the most important room of the house, where the quality of the product is perceived by the attention to the details..

Suivre la simplicité de la lumière, vivre l'harmonie de lignes et volumes. Projetée pour ajouter émotions à l'ambiance le plus important de la maison, où la qualité du produit se montre par l'attention aux détails.

Seguir la simplicidad de la luz, vivir la armonía de las líneas y de los volúmenes. Diseñada para añadir emociones a la zona más importante de la casa, donde la calidad del producto se ve a través de la atención a los detalles.







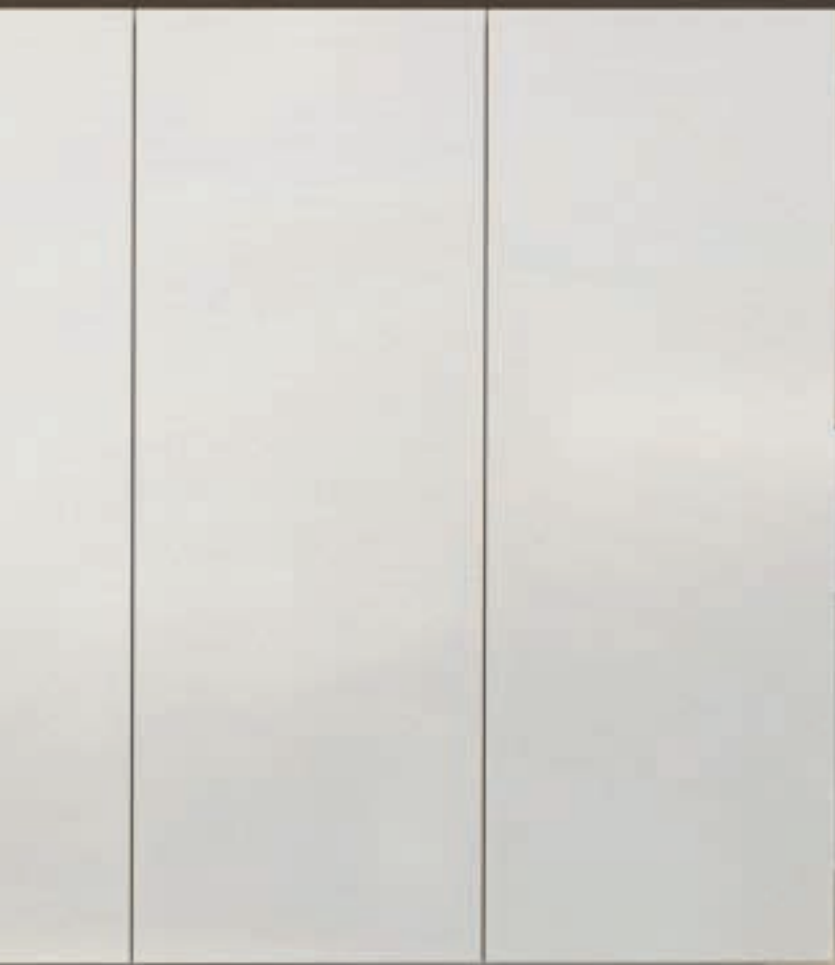












arketipo
BOLOGNINO

arketipo
BOLOGNINO

LE CORDON ROUGE
LOUIS KAHN
LE CORDON ROUGE

LE CORDON ROUGE
LOUIS KAHN
LE CORDON ROUGE



LE CORDON ROUGE
LOUIS KAHN
LE CORDON ROUGE
LOUIS KAHN



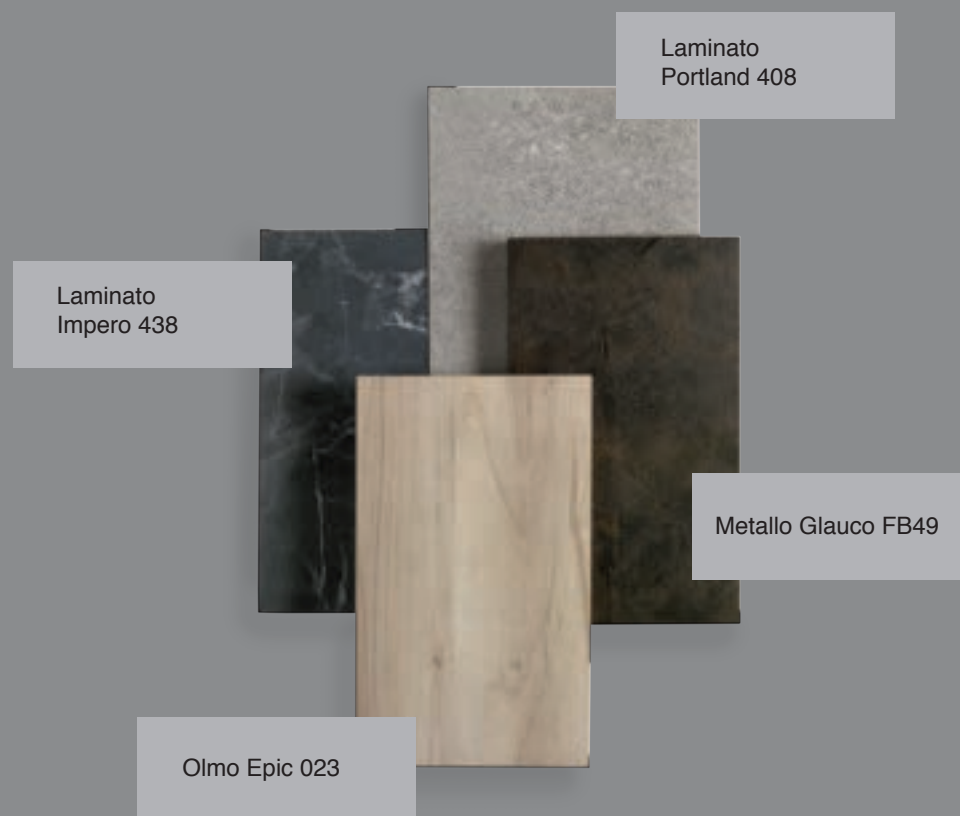
Originali soluzioni living coordinate armonicamente e integrabili con il progetto cucina. Le eleganti mensole ad L creano volumi paralleli per una cucina minimale dando origine ad un nuovo linguaggio progettuale.

Original solutions for the living room, harmoniously combined and integrated with the kitchen project. Elegant L shape shelves create parallel volumes for a minimal kitchen with a new design language.

Des solutions living originales, combinées harmonieusement et parfaitement intégrables au projet de la cuisine. Étagères à L très élégantes, pour créer des volumes parallèles, pour une cuisine minimale, qui donnent origine à un nouveau langage de dessin.

Soluciones originales por el living coordinadas con armonía y integradas con el proyecto de la cocina. Estantes elegantes con forma de L crean volúmenes paralelos por una cocina mínima con un nuevo lenguaje de diseño





Cucina B22: Una scelta dinamica per una composizione ad angolo con collegata zona soggiorno. Colonne e basi cucina in nobilitato metallo glauco FB49. Pensili e tutte le pannellature sono in nobilitato Olmo Epic 023. Superfici morbide al tatto ma allo stesso tempo funzionali e resistenti. Il top cucina e l'isola sono in laminato Portland con la parte snack in laminato Impero. La cucina si arricchisce con telai a vetro tinta carbonio, dal grande impatto visivo, creando un'atmosfera ricercata e unica.

B22 Kitchen: A dynamic choice for a corner composition connected with the living area. Tall and base cabinets in melamine metallic Glauco FB49. The upper cabinets and the panels are in melamine Elm Epic 023. Soft-touch surfaces, at the same time resistant and functional. The countertop for the kitchen and for the island, is laminated Portland with the breakfast bar in laminated Impero. The kitchen is architecturally enriched with glass doors with carbon frames, giving a great visual impact and creating a sophisticated and unique atmosphere.

Cuisine B22 : Un choix dynamique pour une composition d'angle connectée au séjour. Armoires et meubles bas en mélamine métal Glauco FB49. Les meubles hauts et les habillages sont en mélamine Orme Epic 023. Surfaces douces à la touche ainsi que fonctionnelles et résistantes. Les plans de travail de la cuisine et de l'îlot sont en stratifié Portland, le plan snack en stratifié Impero. La cuisine s'enrichit architecturalement par des portes vitrées avec un cadre finition charbon, qui donnent un grand impact visuel en créant une atmosphère sophistiquée et unique

Cocina B22: Una idea dinámica para una composición de esquina conectada al salón. Columnas y muebles bajos de melamina metal Glauco FB49. Los muebles altos y los paneles son de melamina Olmo Epic 023. Superficies suaves al tacto pero a lo mismo funcionales y resistentes. Las encimeras de la cocina y de la isla están de laminado Portland y la parte snack de laminado Impero. La cocina se enriquece arquitectónicamente gracias a las puertas de cristal con marco color carbón, que llevan un gran impacto visual, creando una atmósfera sofisticada y única.





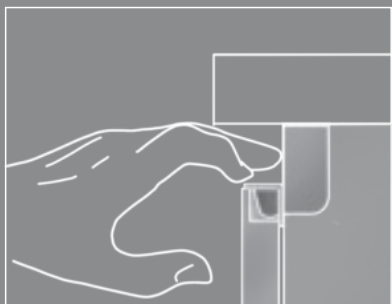


SISTEMA APERTURA

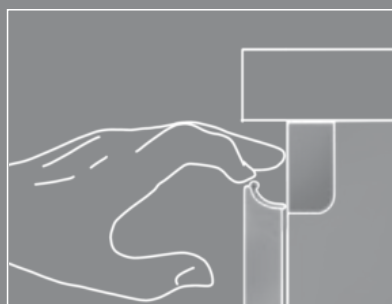
OPENING SYSTEM

SYSTEME D'OUVERTURE

SISTEMA DE ABERTURA



Gola piatta Presa 177



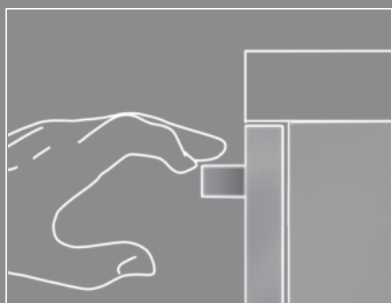
Gola piatta Presa 174



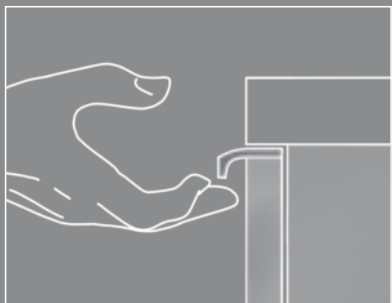
Gola sagomata



Push-pull



Maniglia



Maniglia 170

Questo progetto permette di interpretare l'ambiente cucina con versatilità e carattere. Il gusto e la grazia dei sapori antichi in chiave contemporanea. Sempre alla ricerca di nuove idee d'arredo per creare un linguaggio dove lo spazio si trasforma.

This project gives the opportunity to interpret the kitchen environment with versatility and personality. The taste and the grace of tradition studied in a contemporary way. We are always looking for new furnishing ideas to create a language where the space is transformed.

Ce projet permet d'interpréter la cuisine avec éclectisme et caractère. Le goût et la grâce de saveurs traditionnelles transformés en manière contemporaine. Toujours à la recherche de nouvelles idées pour meubler et pour créer un langage où l'espace se transforme

Este proyecto permite de interpretar el ambiente de la cocina con versatilidad y carácter. El estilo y la gracia de los sabores tradicionales recreados de una manera contemporánea. Siempre buscando nuevas ideas de decoración para crear un lenguaje donde el espacio se transforma.









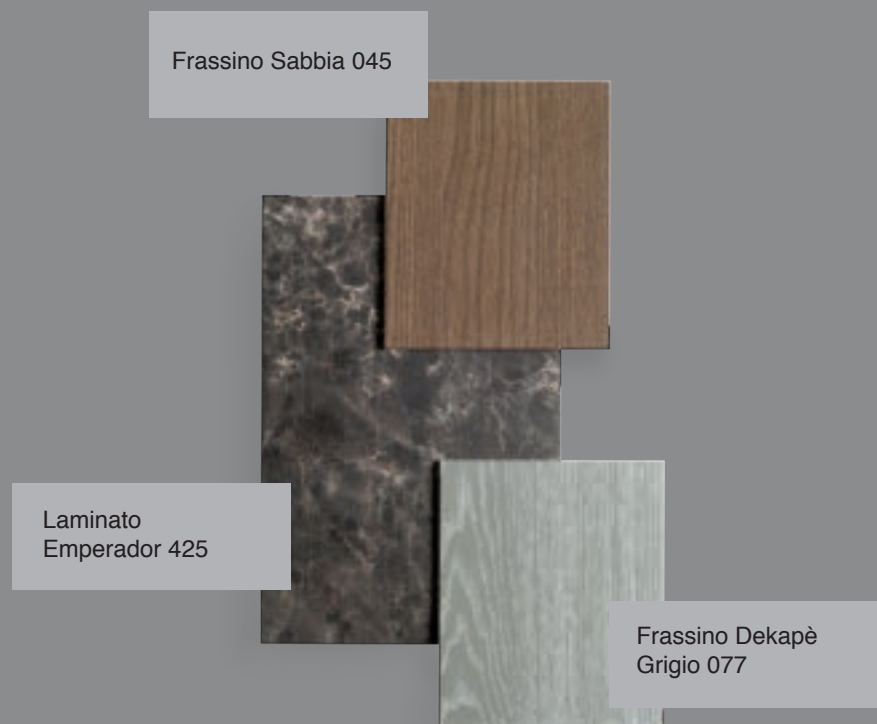










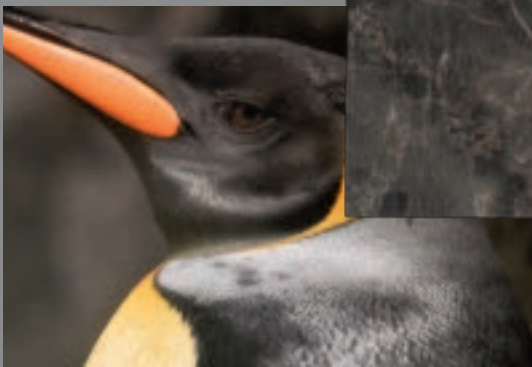


Cucina Tulay: Composizione formata da un grande gruppo colonne e isola centrale in frassino massello tinto sabbia 045. La grande isola con top e fianconi in laminato Emperador apre nuovi filosofie del vivere quotidiano, in un progetto abitativo in continua evoluzione. La zona soggiorno con basi e colonne vetro in frassino massello dekapè grigio 077, completa questa Tulay, dove l'estetica è sempre al servizio della funzionalità, in un giusto equilibrio tra tecnologia e innovazione.

Tulay Kitchen: A composition made of a group of tall cabinets and a central island in solid ash wood Sand 045. The big island, with countertop and gables in laminated Emperador, opens new philosophies of the daily life, in a constant evolving housing project. The living area with base and tall cabinets with glass doors with solid ash wood lacquered frame Decapé Grey 077 complete this Tulay kitchen, where the aesthetic always works with the functionality creating a great balance between technology and innovation.

Cuisine Tulay : Composition formée par un group d'armoires et un îlot central en frêne laqué Sable 045. Le grand îlot, avec plan de travail et joues en stratifié Emperador, ouvre des nouvelles philosophies de la vie quotidienne dans un projet de cuisine en constante évolution. Le séjour montre des bas et des armoires en frêne laqué Gris Décapé 077 avec la façade en verre, en complétant cette cuisine Tulay où l'esthétique est toujours au service de la fonctionnalité, avec un juste équilibre entre la technologie et l'innovation.

Cocina Tulay: Composición de un gran grupo de columnas y una isla central de fresno sólido de color Arena 045. La gran isla con encimera y costados de laminado Emperador, abre nuevas filosofías de la vida diaria en un proyecto de vivienda en constante evolución. El salón, con muebles bajos y columnas de fresno sólido color Decapé Gris 077 con puertas de cristal, lleva al cabo esta cocina Tulay donde la estética es siempre al servicio de la funcionalidad con un equilibrio adecuado entre la tecnología y la innovación.









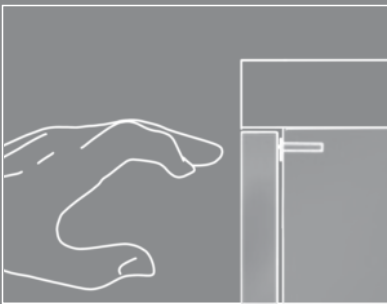


SISTEMA APERTURA

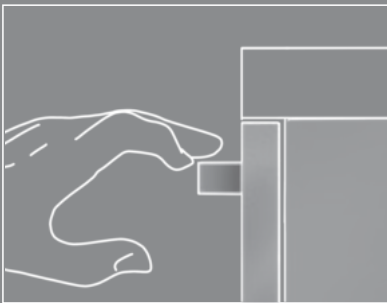
OPENING SYSTEM

SYSTEME D'OUVERTURE

SISTEMA DE ABERTURA



Push-pull



Maniglia

Tulay rende più vissuto in nostro mondo contemporaneo, legarsi ad un passato, convivendo con architetture industriali. Uno stile che mette insieme tante anime, passioni, a rappresentare la nuova frontiera della personalizzazione della cucina.

In our contemporary world, Tulay gives us the possibility to tie ourselves with the past while living with industrial architectures. A style that puts together many souls and passions, to represent the new frontier of customization of the kitchen.

Tulay nous permet de nous lier au passé, en vivant ensemble d'architectures industrielles. Un style qui définit beaucoup d'âmes, passions, pour représenter la nouvelle frontière de la personnalisation de la cuisine.

Tulay hace que nuestro mundo contemporáneo sea más vivido, uniéndose al pasado con arquitecturas industriales. Un estilo que combina muchas almas y pasiones, para representar la nueva frontera de la personalización de la cocina.





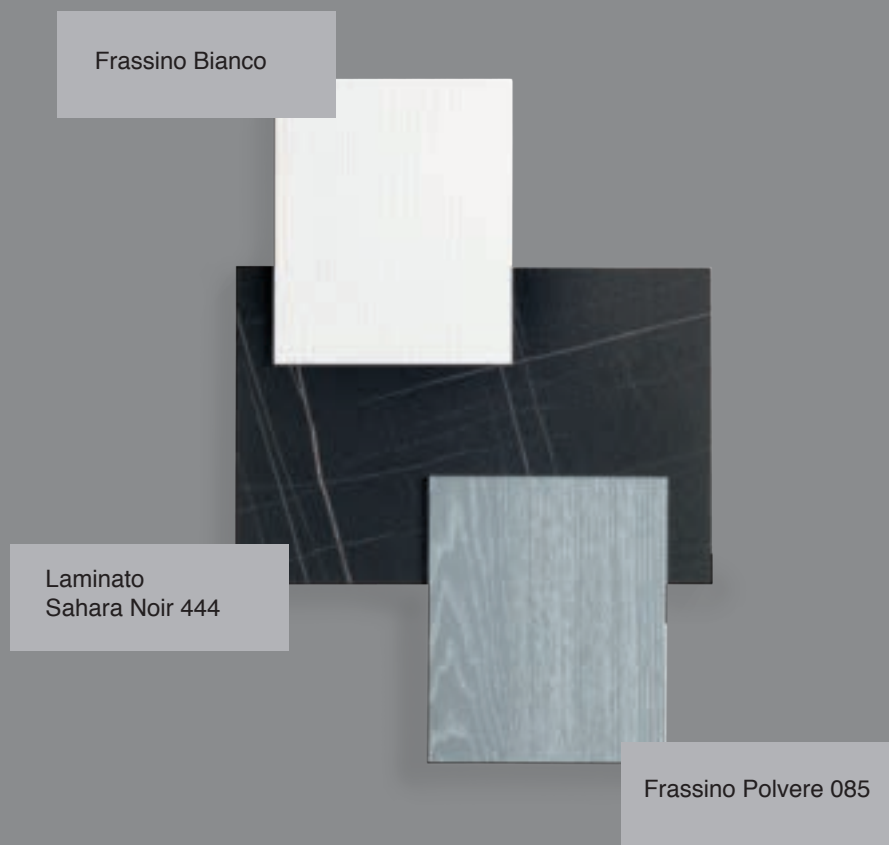










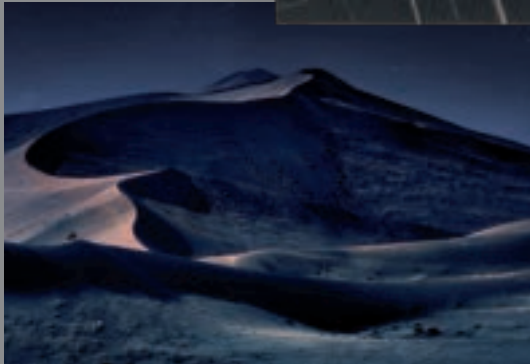


Cucina Tulay: Un accento giovanile e contemporaneo per questa variante di Tulay, cucina ed isola in massello frassino bianco. La grande isola centrale con tavolo viene avvolta da un laminato Sahara noir 444. La soluzione si sviluppa con una zona soggiorno composta da basi frassino massello dekapè polvere 085 ed elementi a vetro con telaio tinta carbonio, per chi ama rigore formale e design evoluto.

Tulay Kitchen: A young and contemporary accent to this Tulay version, kitchen and island all in solid ash wood White. The big central island with the table is wrapped in a laminated Sahara noir. This solution develops with a living area composed of base cabinets of solid ash wood Decapé Powder 077 and elements with glass doors with carbon frame, to all the lovers of formal accuracy and advanced design.

Cuisine Tulay: Pour cette variante de Tulay, un accent jeune et contemporaine, cuisine et îlot en frêne laqué blanc. Le grand îlot central avec le table est entouré par le stratifié Sahara noir. La cuisine se développe en un séjour composé par des meubles bas en frêne laqué Poudre Decapé 085 et éléments avec porte en verre avec cadre finition charbon, pour tout ceux qui aiment un rigueur formel avec un design de haut de gamme.

Cocina Tulay: Un acento joven y contemporáneo para esta variante de Tulay, cocina e isla de fresno sólido color blanco. La gran isla central con la mesa es envuelta en un laminado Sahara noir. La cocina se desarrolla en un salón compuesto por muebles bajos en fresno sólido color Polvo Decapé 085 y elementos con puertas de cristal y marco acabado carbón, para todos los que aman el rigor formal junto a un diseño evolucionado















SISTEMA APERTURA

OPENING SYSTEM

SYSTEME D'OUVERTURE

SISTEMA DE ABERTURA



Push-pull



Maniglia

Perfette per un progetto di cucina-living, dove linee semplici e materiali pregiati garantiscono performance adeguate. Geometrie sempre in movimento, design ricercato ricreano forme compositive eleganti dal sapore contemporaneo per dare emozioni ai gesti quotidiani.

Perfect for a kitchen-living room project, where simple lines and rich materials ensure adequate performances. Moving geometries and elaborate design for elegant shapes, with a contemporary aspect, to give emotions to our daily life.

Parfaites pour un projet de cuisine-salon, où les lignes simples et les matériaux de qualité assurent des performances adéquates. Géométries toujours en mouvement et un dessin raffiné, recherchent des formes de composition élégantes avec un goût contemporain pour donner émotions aux gestes quotidiennes.

Perfectas para un proyecto de cocina-living, donde las líneas simples y los materiales de calidad aseguran un rendimiento adecuado. Geometrías siempre en movimiento y un diseño refinado para buscar formas compositivas elegantes con un sabor contemporáneo, para dar emociones a la vida diaria











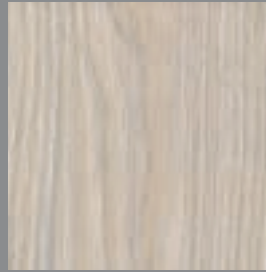


MATERIALS

ROVERE
OAK
CHÊNE
ROBLE



BRUCIATO U129



EFFRE S123



NECKINGER S121



WALBROOK S126

ROVERE NODATO
OAK WITH KNOT
CHÊNE AVEC NEUDS
ROBLE CON NUDOS

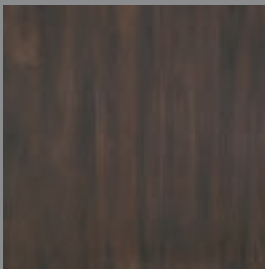


NATURALE H 1180



AVANA 988

OLMO
ELM
ORME
OLMO



CENTRAL M025

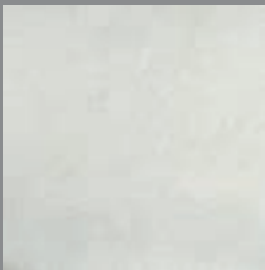


CHRYSLER M021

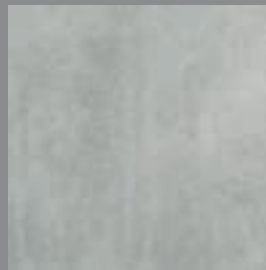


EPIC M023

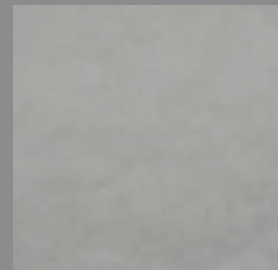
CEMENTO
CEMENT
CIMENT
CIMENTO



BIANCO FB50



GRIGIO FB02

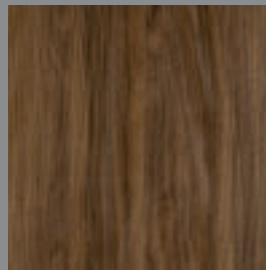


PERLATO FB53

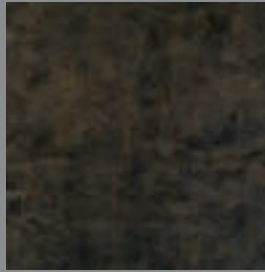
NOCE
WALNUT
NOYER
NOGAL



NATURALE 5430



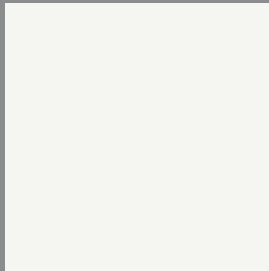
DECISO 5429



GLAUCO FB49

METALLO

*METAL
METAL
METAL*



BIANCO OMF



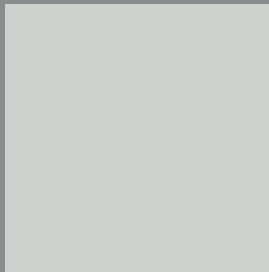
NERO U999



TORTORA AP2

TINTE UNITE

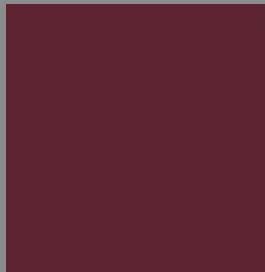
*PLAIN COLOURS
COLORIS PLEINS
COLOR LISO*



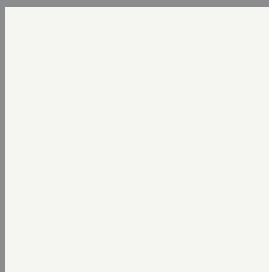
GRIGIO CHIARO OA8



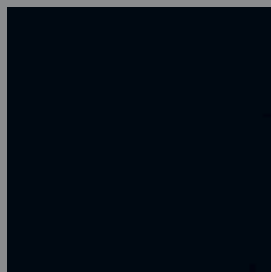
GRIGIO SCURO OF3



ROSSO VINO 29L



BIANCO OMF



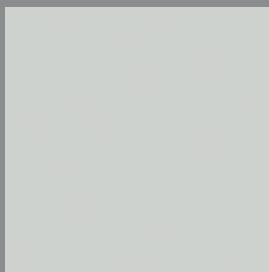
NERO U999



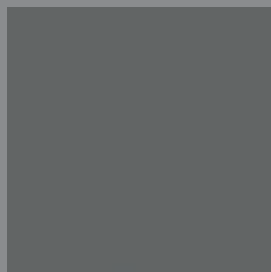
TORTORA AP2

ECCIMERI

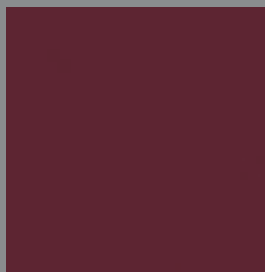
*EXCIMERS
EXCIMERES
EXCIMEROS*



GRIGIO CHIARO OA8

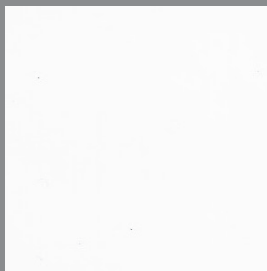


GRIGIO SCURO OF3



ROSSO VINO 29L

OPACO
MATT
MAT
MATE



BIANCO FD10



SABBIA FD30



SETA FD25



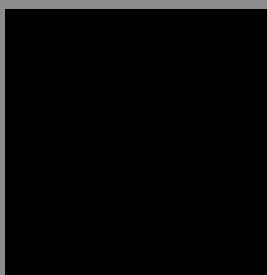
GRIGIO PIETRA PR10



SAHARA PR05

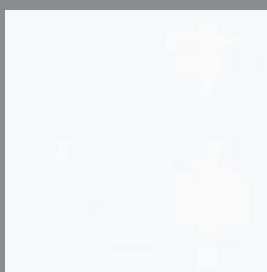


GRIGIO ARDESIA FD35



NERO PR15

LUCIDO
GLOSS
BRILLANT
BRILLO



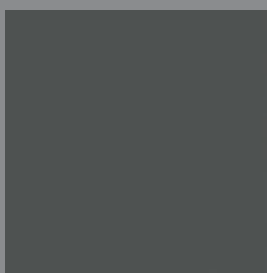
BIANCO FD05



LAVA FD20



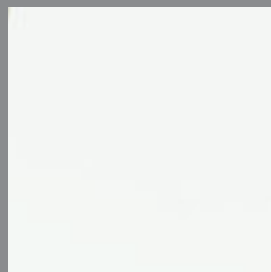
GRIGIO SETA FD15



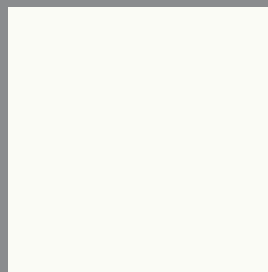
GRIGIO OMBRA PR20



BIANCO ARTICO 138

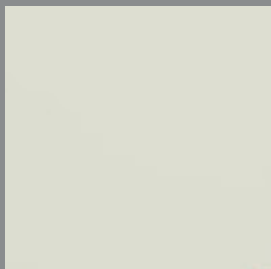


BIANCO DAX 136

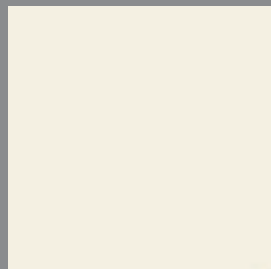


BIANCO 100

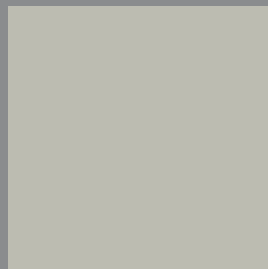
TINTE UNITE
PLAIN COLOURS
COLORIS PLEINS
COLOR LISO



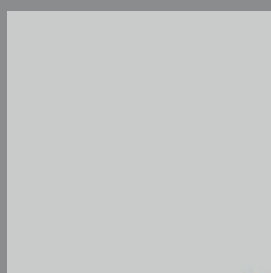
PANNA 101



AVORIO 102



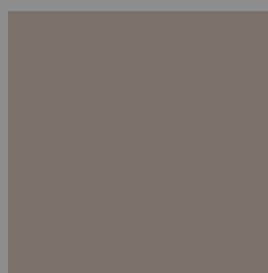
SABBIA 103



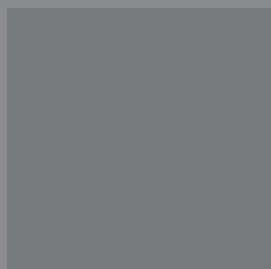
GRIGIO CHIARO 104



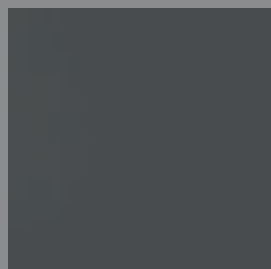
CANAPA 200



TORTORA 111



GRAY 160

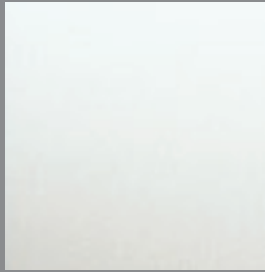


GRAFITE 107

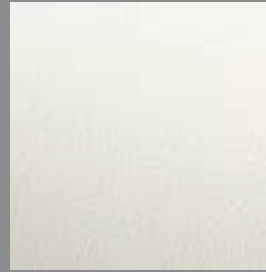


ROSSO 105

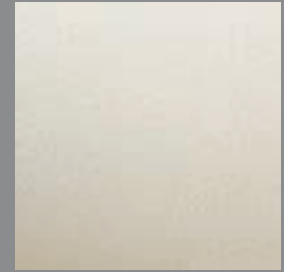
PIETRE / CEMENTI
STONES / CEMENT
PIERRES / CEMENTS
PIEDRAS / CIMENTOS



BIANCO DAX STONE 139



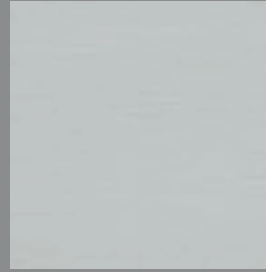
WHITE ROCK 137



MURO 123



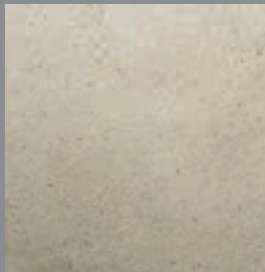
CANAPA STONE 201



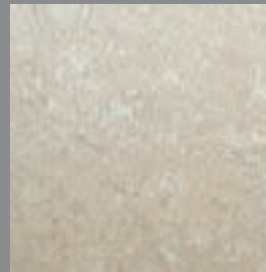
SILVER STONE 202



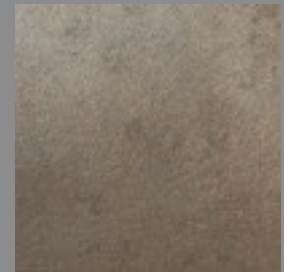
GRAY STONE 203



GRES 122



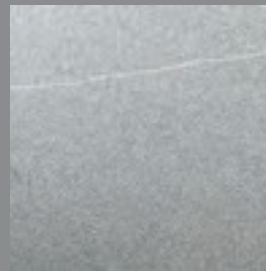
PIETRA DI NANTO 144



PORFIDO 119



BASALTO CENERE 403



PIASENTINA 149



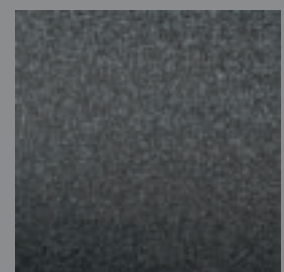
PIETRA LAVICA 140



CEMENTO 143



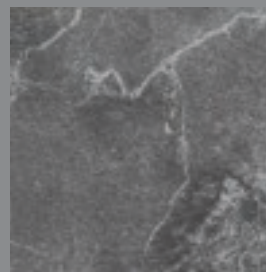
PIETRA GRIGIA 118



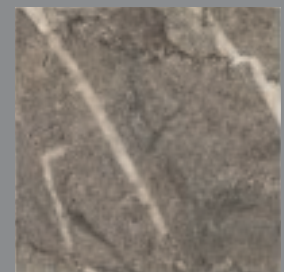
BLACK ROCK 120



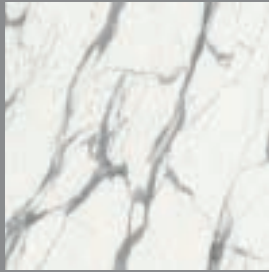
CUMA LIGHT 427



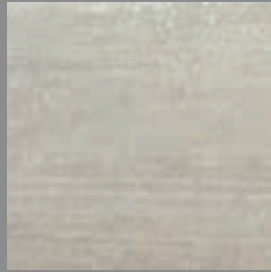
CUMA DARK 428



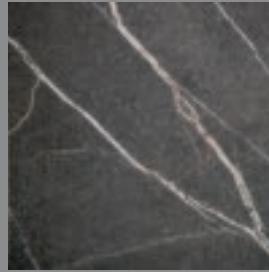
CHEOPE 442



STATUARIO 439

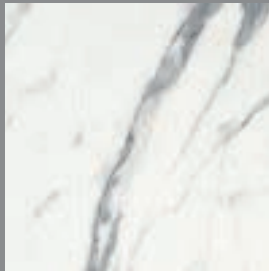


TRAVERTINO TIVOLI 148

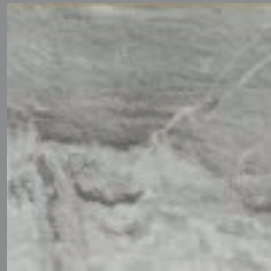


DARK PULPIS 443

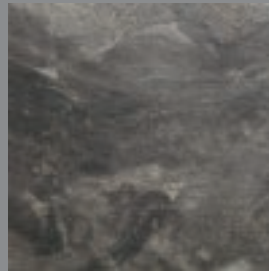
PIETRE / CEMENTI
STONES / CEMENT
PIERRES / CEMENTS
PIEDRAS / CIMENTOS



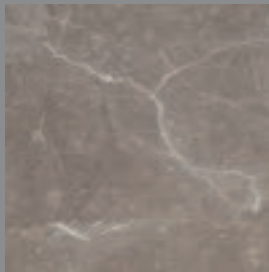
CALACATTA 424



PALLADIO 433



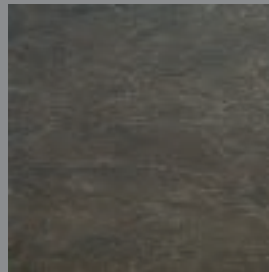
CANOVA 434



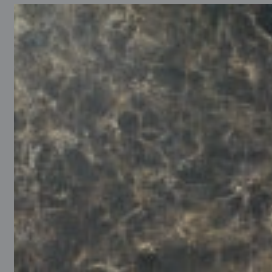
BOTTICINO 410



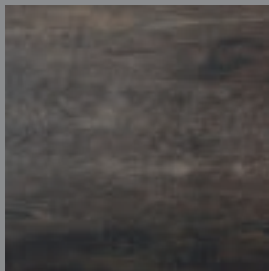
EVORA 411



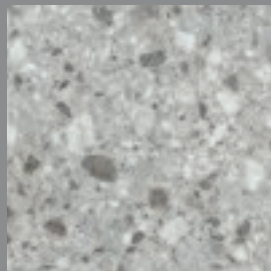
EMERALD 412



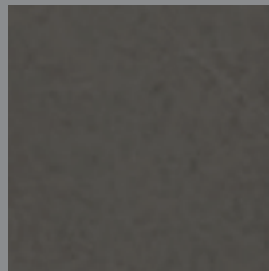
EMPERADOR 425



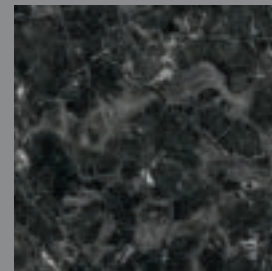
FOSSILE 400



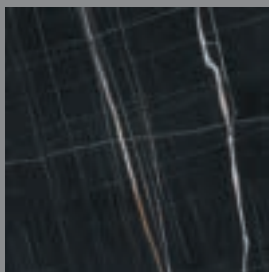
MAILAND 441



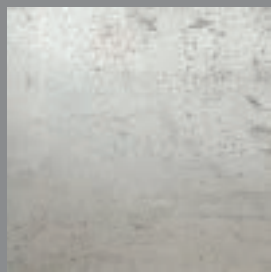
TOBACCO 440



IMPERO 438



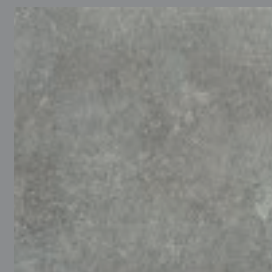
SAHARA NOIR 444



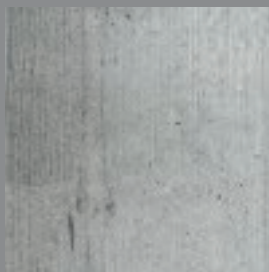
ANTIBES 413



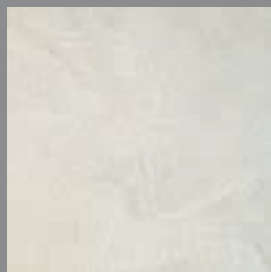
PIETROBURGO 421



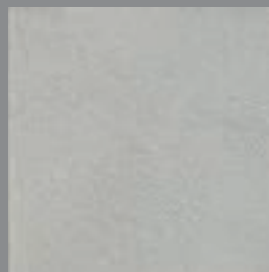
PORTLAND 408



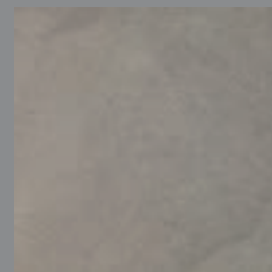
CEMENTO DOGATO 407



MALTA BIANCA 430



MALTA GRIGIA 431



MALTA CANAPA 432

LEGNI
WOODS
BOIS
MADERAS



WHITE WOOD 133



ROVERE WAFER 310



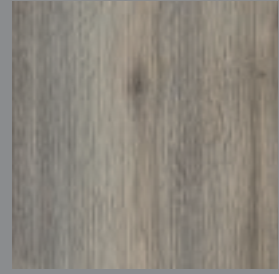
OLMO 134



ROVERE NATURALE 302



ROVERE PRUSSIA 308



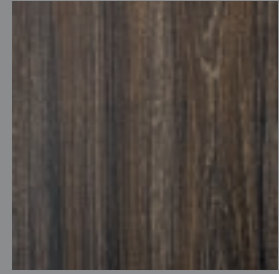
ROVERE TEXAS 306



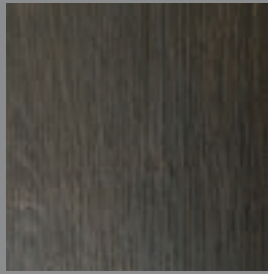
ROVERE FUMO 307



ROVERE TABACCO 301



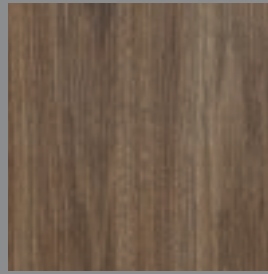
OLMO SCURO 303



ROVERE BRUCIATO 130



ROVERE GRAFITE 132



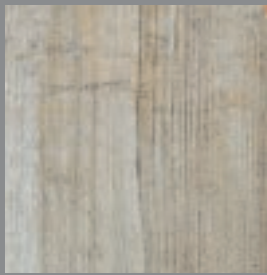
NOCE SAVOIA 405



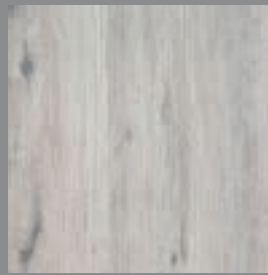
NOCE 131



ROVERE CALIFORNIA 309



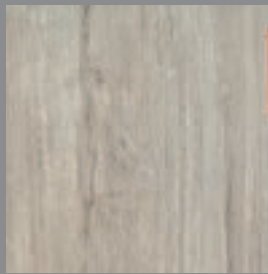
PINO VINTAGE 415



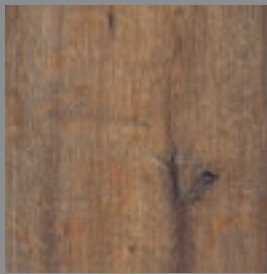
ROVERE ARTICO 419



OLD AMERICA 414



QUERCIA GRIGIA 422



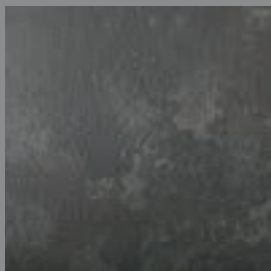
ROVERE VERSAILLES
418



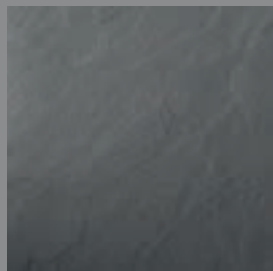
ROVERE MONET 423



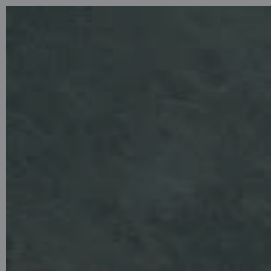
ROVERE SLAVONIA 417



CESAR BROWN STONE
145



ARDESIA 115



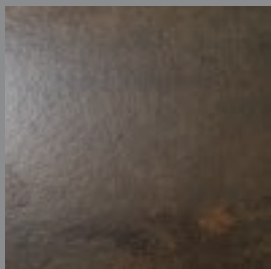
NERO ARDESIA 420

METALLI / OSSIDI

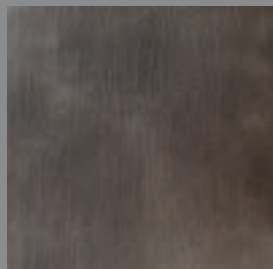
METALS / OXIDE

METAUX / OXYDES

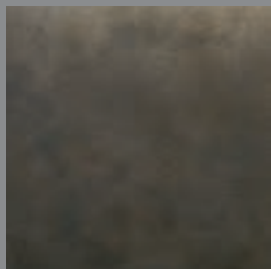
METALOS / OXIDOS



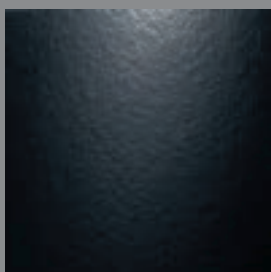
OSSIDO 146



TADAO 426



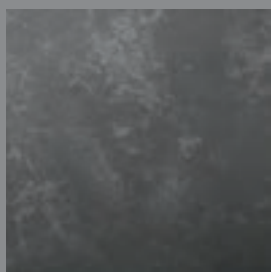
CORTEN 406



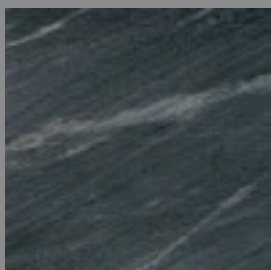
NERO MARTELLATO 110



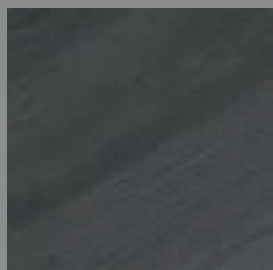
SILVER VOYAGE 429



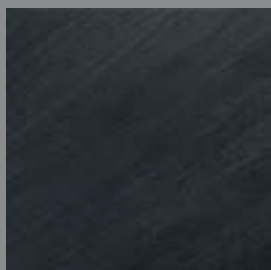
CESAR BROWN 117



CALYPSO 435



MUNE' GRAY 436

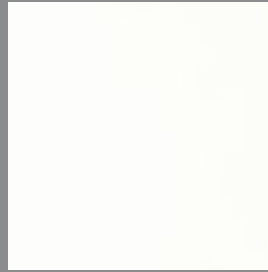


MUNE' BLACK 437

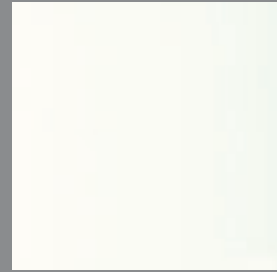
FENIX NTM



BIANCO ALASKA FX30



BIANCO KOS FX32



BIANCO MALE' FX29



GRIGIO EFESEO FX725



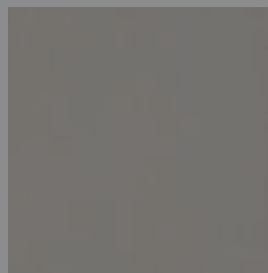
BEIGE ARIZONA FX748



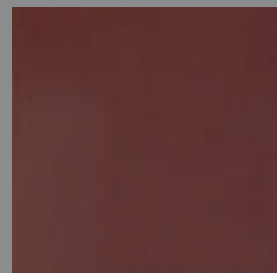
BEIGE LUXOR FX719



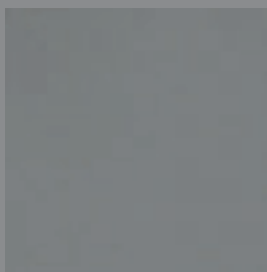
CASTORO OTTAWA
FX717



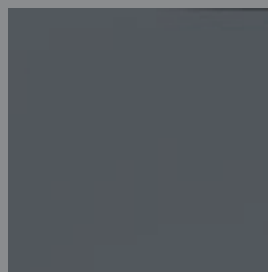
GRIGIO LONDRA FX718



ROSSO JAIPUR FX751



GRIGIO ANTRIM FX752



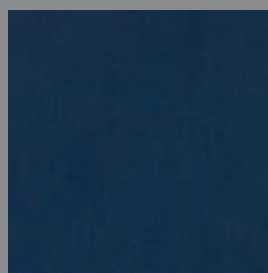
GRIGIO BROMO FX724



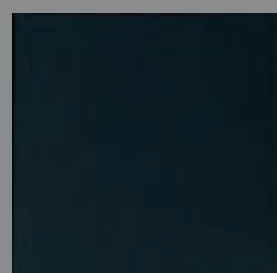
CACAO ORINOCO FX749



VERDE COMODORO
FX750



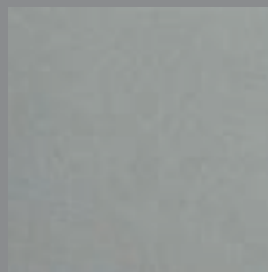
BLU FES FX754



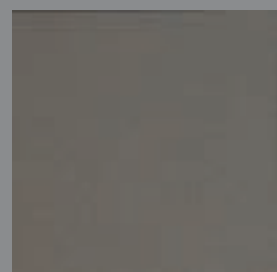
NERO INGO FX720



ZINCO DOHA FX2628

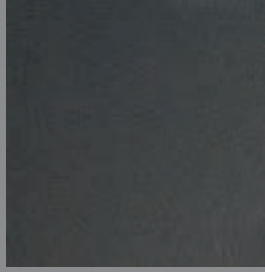


TITANIO DOHA FX2638



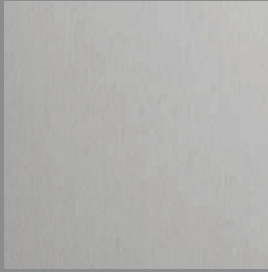
BRONZO DOHA FX2629

FENIX NTM



PIOMBO DOHA FX2630

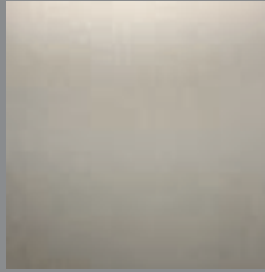
FENIX NTA



ACCIAIO HAMILTON
FX5000



ARGENTO DUKAT FX5001



ORO CORTEZ FX5003

LUCIDO
GLOSS
BRILLANT
BRILLO



OPACO
MATT
MAT
MATE





NATURALE



GRIGIO



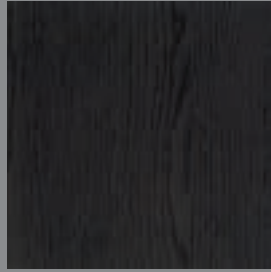
FANGO

ROVERE 1/2 FIAMMA

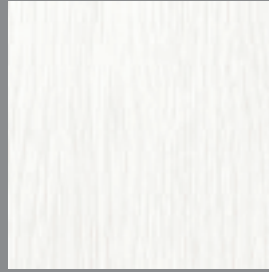
*OAK
CHÊNE
ROBLE*



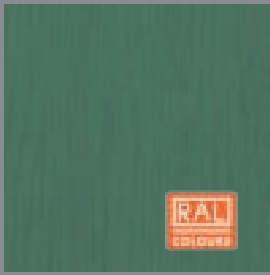
TERRA



MORO



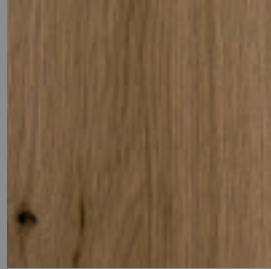
LACCATO BIANCO



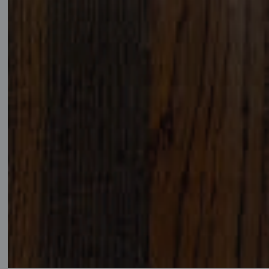
LACCATO RAL



NATURALE



TABACCO



TERMOCOTTO

ROVERE NODATO

*OAK WITH KNOTS
CHÊNE AVEC NEUDS
ROBLE CON NUDOS*

ROVERE TERMOCOTTO

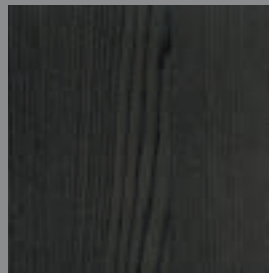
*THERMO-COOKED OAK
CHÊNE THERMO-CUIT
ROBLE TERMO-QUEMADO*



NATURALE



GRIGIO



SCURO

OLMO

*ELM
ORME
OLMO*



CANALETTO



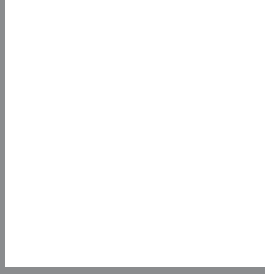
MEDIO

NOCE

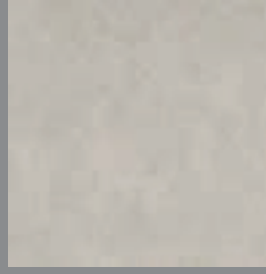
*WALNUT
NOYER
NOGAL*

G30 - B22 LAMINAM

LAMINAM



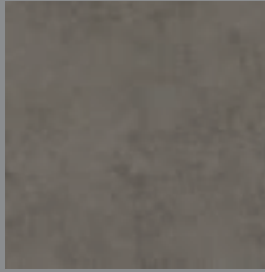
BIANCO ASSOLUTO



FOKOS SALE



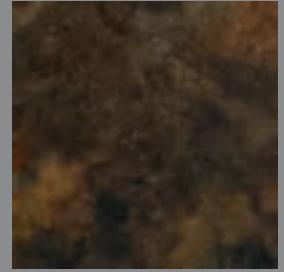
FOKOS TERRA



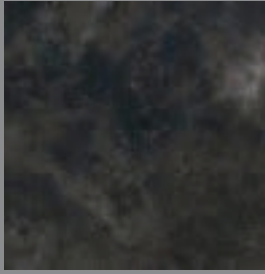
FOKOS ROCCIA



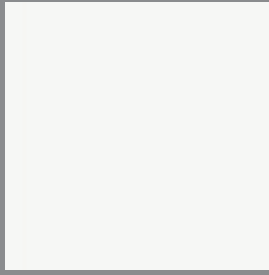
FOKOS PIOMBO



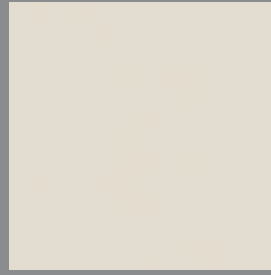
OSSIDO BRUNO



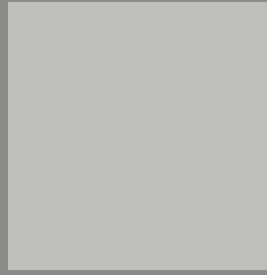
OSSIDO NERO



BIANCO

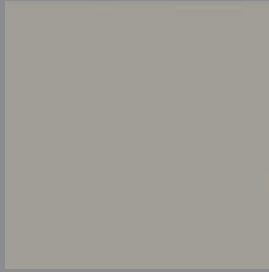


PERLA



GESSO

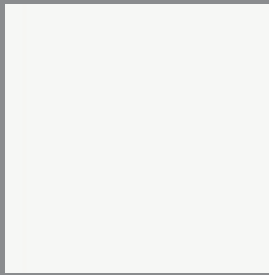
LUCIDO
GLOSS
BRILLANT
BRILLO



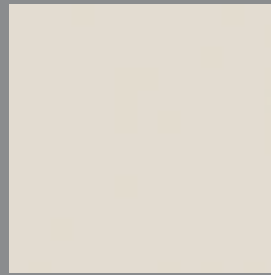
GHIAIA



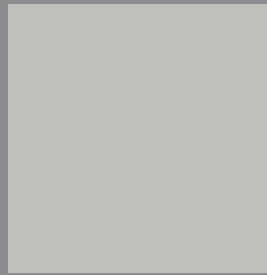
BASALTO



BIANCO

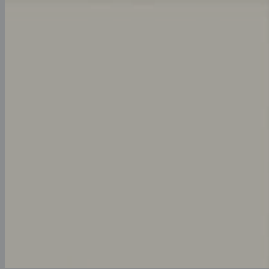


PERLA



GESSO

OPACO
MATT
MAT
MATE

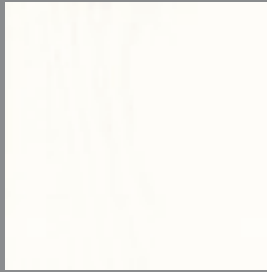


GHIAIA



BASALTO

TINTE UNITE
PLAIN COLOURS
COLORIS PLEINS
COLOR LISO

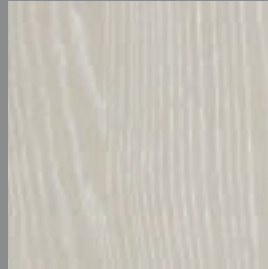


BIANCO

DEKAPE'
DEKAPE'
DEKAPE'
DEKAPE'



BIANCO 001



BEIGE 013



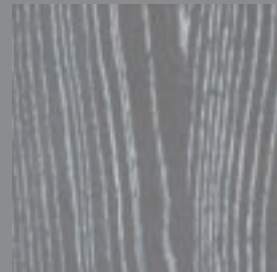
GHIAIA 011



GRIGIO 077

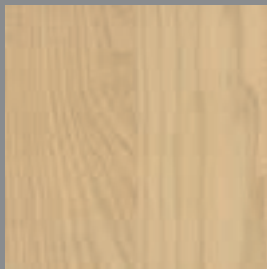


POLVERE 085



PLATINO 079

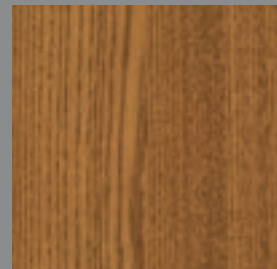
LEGNI
WOODS
BOIS
MADERAS



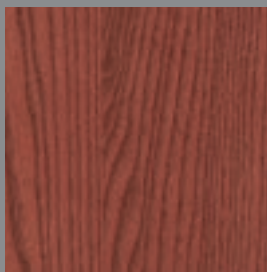
NATURALE 010



SABBIA 085



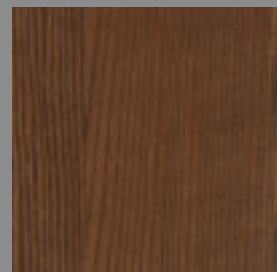
ESSENZA 015



ROSSO 040



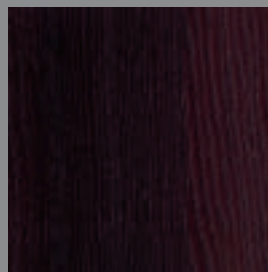
FUMO 020



ARGILLA 025



AZZURRO 035



BRUNITO 030

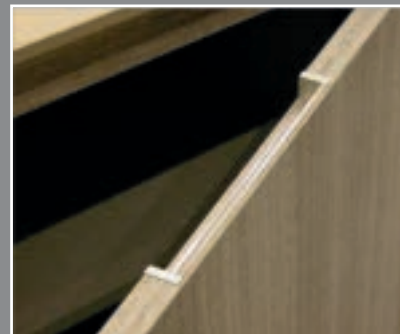


GOLE/MANIGLIE

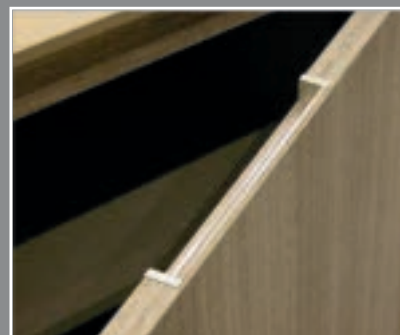
MANIGLIE PER GOLA PIATTA - *FINGER GRIP HANDLES FOR GOLA PROFILE, FLAT VERSION-*
POIGNEES INTEGREES POUR PRISE DE MAIN PLATE - TIRADORES INTEGRADOS PARA PERFIL GOLA PLANA

GOLA PIATTA PRESA 177

FINGER GRIP HANDLE 177
POIGNEE INTEGREE 177
TIRADOR INTEGRADO 177



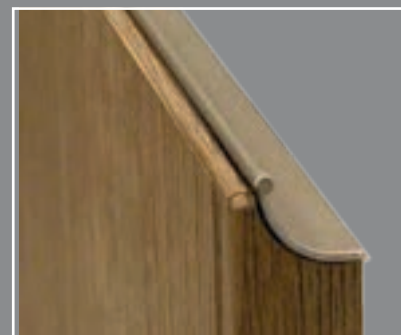
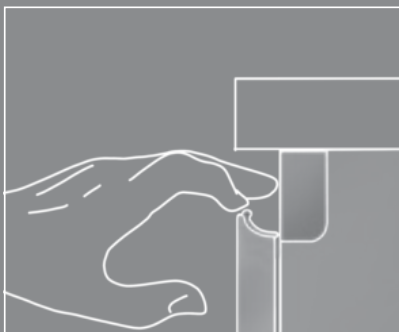
ACCIAIO SATINATO COD.177 SAG
BRUSHED STEEL 177 SAG
SATINEE 177 SAG
SATINADO 177 SAG



BRUNITA COD 177 BRG
BURNISHED STEEL 177 BRG
BRUNIE 77 BRG
BRUÑIDO 177 BRG

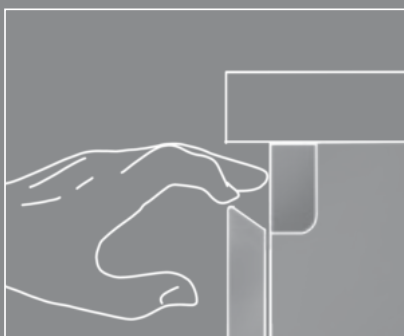
GOLA PIATTA PRESA 174

FINGER GRIP HANDLE 174
POIGNEE INTEGREE 174
TIRADOR INTEGRADO 174



ACCIAIO SATINATO COD.174
BRUSHED STEEL 174
SATINEE 174
SATINADO 174

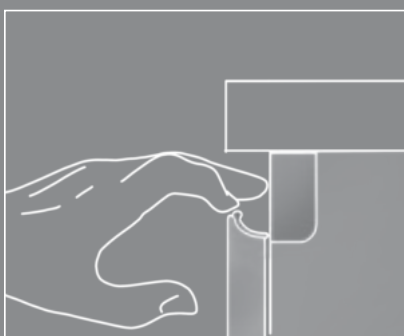
SISTEMA APERTURA GOLA PIATTA - GOLA PROFILE FLAT VERSION -
SYSTEME D'OUVERTURE AVEC PRISE DE MAIN PLATE - SISTEMA DE ABERTURA PERFIL GOLA PLANA



SISTEMA PRESA 30°
 30° GRIP HANDLE
 FAÇADE BISEAUTE' 30°
 PUERTA CON CANTO 30°

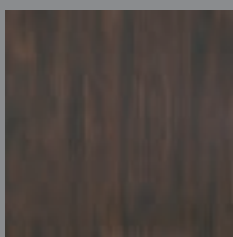


GOLA PIATTA PRESA 177
 FINGER GRIP HANDLE 177
 POIGNEE INTEGREE 177
 TIRADOR INTEGRADO 177

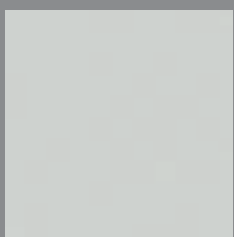


GOLA PIATTA PRESA 174
 FINGER GRIP HANDLE 174
 POIGNEE INTEGREE 174
 TIRADOR INTEGRADO 174

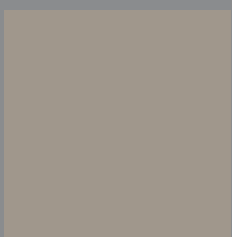
FINITURE GOLA PIATTA - FINISHES FOR GOLA PROFILE FLAT VERSION -
FINITIONS POUR PRISE DE MAIN PLATE - ACABADOS PARA PERFIL GOLA PLANA



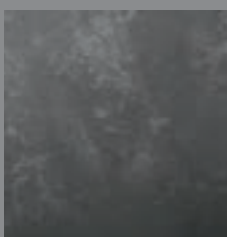
NOBILITATI



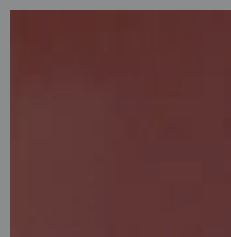
ECCIMERI



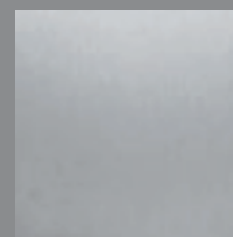
PET



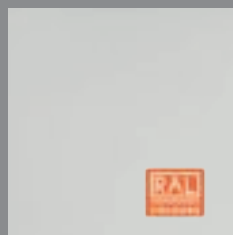
LAMINATI



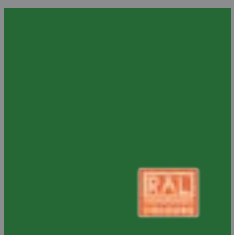
FENIX NTM



FENIX NTA



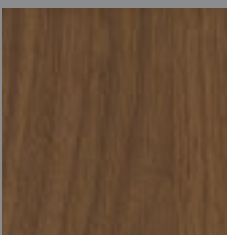
**LACCATI
OPACHI RAL**



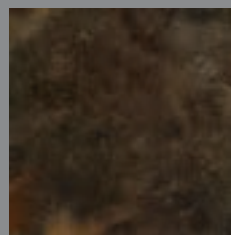
**LACCATI
LUCIDI RAL**



**IMPIALLACCIATI
ROVERE 1/2 FIAMMA/
NODATO**



**ESSENZE
LEGNO**



LAMINAM



VETRO Laccato

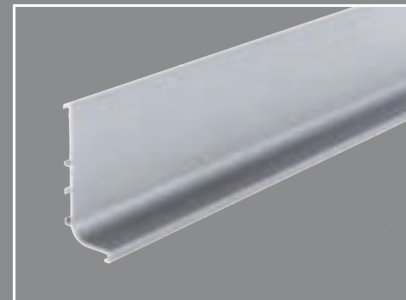
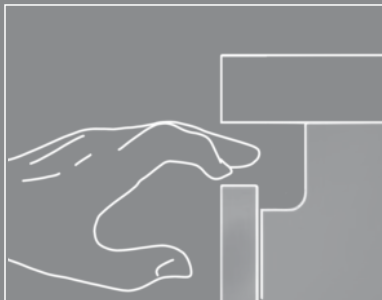
SISTEMA APERTURA PER GOLA SAGOMATA -

OPENING SYSTEM FOR SHAPED GOLA CHANNEL - SYSTEME D'OUVERTURE POUR PRISE DE MAIN GOLA -
SISTEMA DE ABERTURA PARA PERFIL GOLA

SISTEMA PRESA BORDO DIRITTO

GOLA CHANNEL WITH 4 EDGE DOOR

PRISE DE MAIN GOLA POUR FACADE 4 CHANTS DROITS
PERFIL GOLA PARA PUERTA CON 4 CANTOS RECTOS



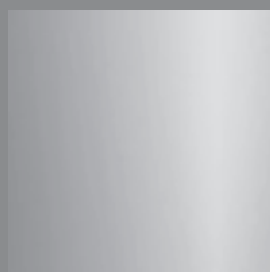
SISTEMA PRESA 30°

GOLA CHANNEL WITH 30° DOOR

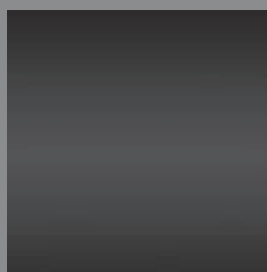
PRISE DE MAIN GOLA POUR FACADE BISEAUTE' 30°
PERFIL GOLA PARA PUERTA CON CANTO 30°



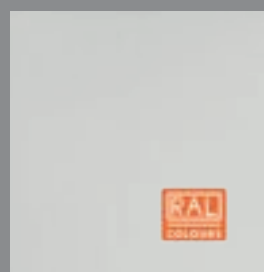
FINITURE GOLA SAGOMATA- SHAPED GOLA CHANNEL FINISHES- FINITIONS POUR PRISE DE MAIN GOLA - ACABADOS PARA PERFIL GOLA



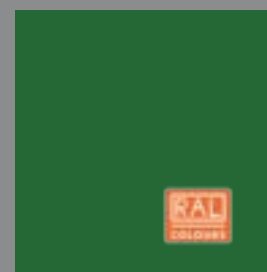
TITANIO



CARBONIO

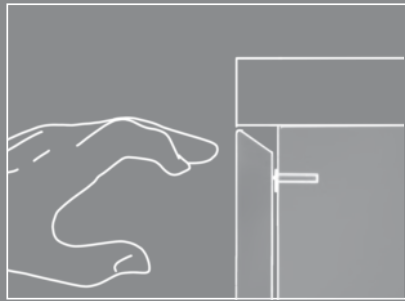


LACCATI OPACHI RAL



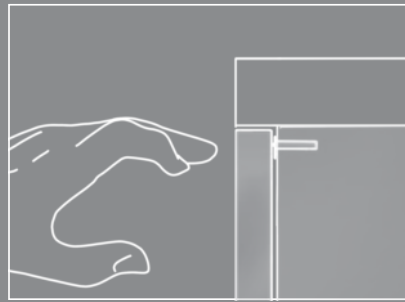
LACCATI LUCIDI RAL

SISTEMA APERTURA PUSH PULL- PUSH PULL OPENING MECHANISM -
SYSTEME D'OUVERTURE AVEC TOUCHE-LACHE - SISTEMA DE ABERTURA CON PUSH PULL



SISTEMA PUSH PULL SU 30°

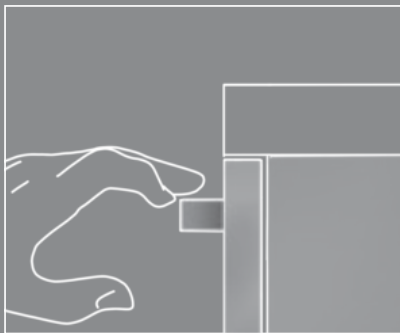
*PUSH PULL OPENING MECHANISM ON 30° DOOR
SYSTEME D'OUVERTURE AVEC TOUCHE-LACHE
AVEC FACADE BISEAUTE' 30°
SISTEMA DE ABERTURA CON PUSH PULL CON
PUERTA CON CANTO 30°*



SISTEMA PUSH PULL SU BORDO DIRITTO

*PUSH PULL OPENING MECHANISM ON 4 EDGE DOOR
SYSTEME D'OUVERTURE AVEC TOUCHE-LACHE AVEC
FACADE 4 CHANTS DROITS
SISTEMA DE ABERTURA CON PUSH PULL CON
PUERTA CON 4 CANTOS RECTOS*

MANIGLIE
HANDLES
POIGNEES
TIRADORES



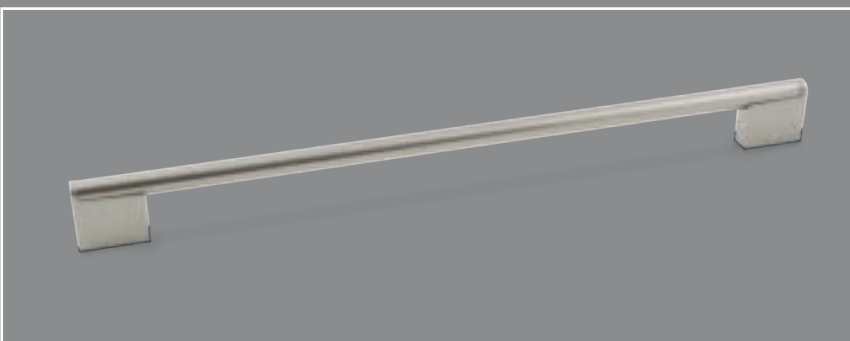
CODICE 251NE
CODE 251NE
CODE 251NE
CÓDIGO 251NE



CODICE 251SA
CODE 251SA
CODE 251SA
CÓDIGO 251SA



CODICE 164
CODE 164
CODE 164
CÓDIGO 164



CODICE 164NE
CODE 164NE
CODE 164NE
CÓDIGO 164NE





CODICE 250NE

*CODE 250NE
CODE 250NE
CÓDIGO 250NE*



CODICE 250BZ

*CODE 250BZ
CODE 250BZ
CÓDIGO 250BZ*



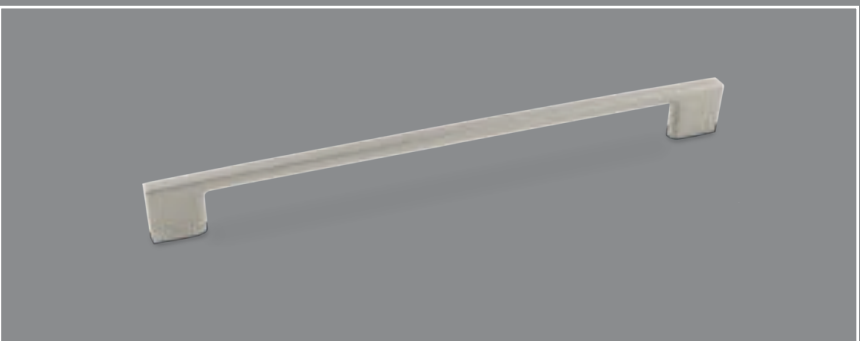
CODICE 249NE

*CODE 249NE
CODE 249NE
CÓDIGO 249NE*



CODICE 249BZ

*CODE 249BZ
CODE 249BZ
CÓDIGO 249BZ*

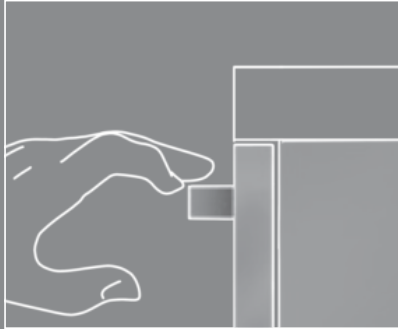


CODICE 119

*CODE 119
CODE 119
CÓDIGO 119*

MANIGLIE

MANIGLIE
HANDLES
POIGNEES
TIRADORES



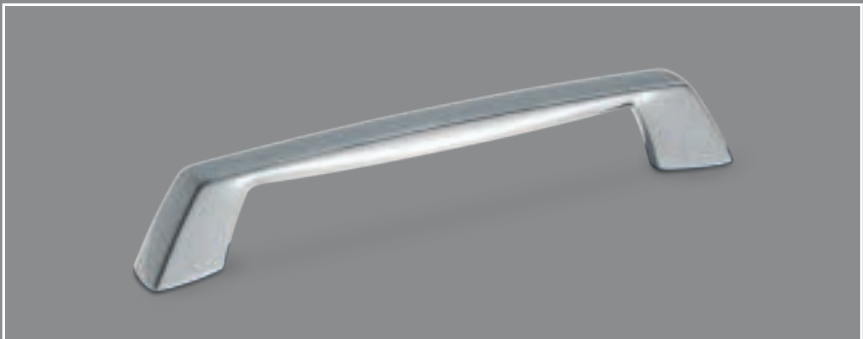
CODICE 170
CODE 170
CODE 170
CÓDIGO 170



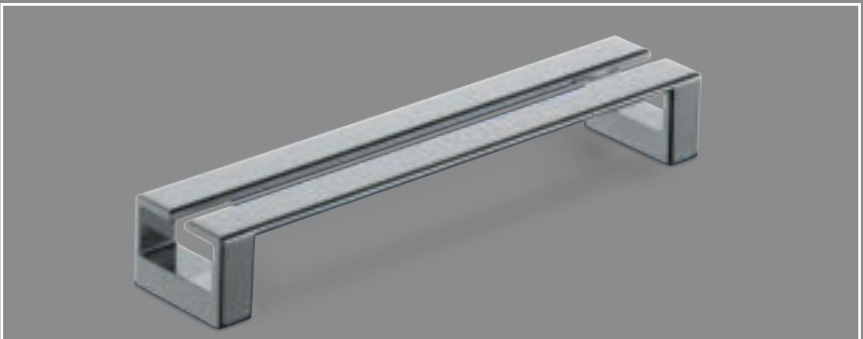
CODICE 143
CODE 143
CODE 143
CÓDIGO 143



CODICE 145
CODE 145
CODE 145
CÓDIGO 145



CODICE 142
CODE 142
CODE 142
CÓDIGO 142





CODICE 152

CODE 152

CODE 152

CÓDIGO 152



CODICE 247

CODE 247

CODE 247

CÓDIGO 247



CODICE 242

CODE 242

CODE 242

CÓDIGO 242



CODICE 243

CODE 243

CODE 243

CÓDIGO 243



Tutti i diritti sono riservati, è vietata la riproduzione, anche parziale, delle immagini.
All rights are reserved, the reproduction of the images, even partial, is prohibited.
Tous droits sont réservés, la reproduction des images, même si partielle, est interdite.
Todos los derechos son reservados, la reproducción, también parcial, de las imágenes es prohibida.

PROGETTO
C.R.S. TRE O

ART BUYER
LAURA COMIOTTO

IMMAGINI E GRAFICA
IKB FOTO
CARLO GESSAGA
BRUNO VEZZOLI

STAMPA
GRAFICHE ANTIGA